

# Tiges et cotyles

*Stems and cups*



TIGES  
et COTYLES

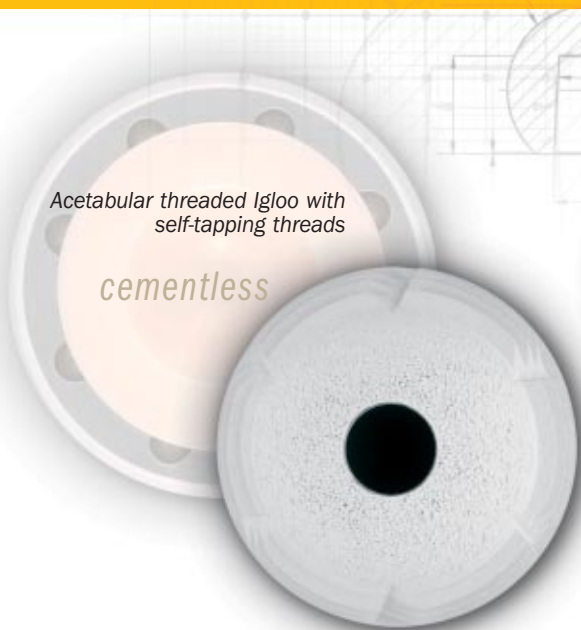
Hanche  
*Hip*



**BIOTECHNI**<sup>®</sup>

Acetabular threaded Igloo with self-tapping threads

*cementless*



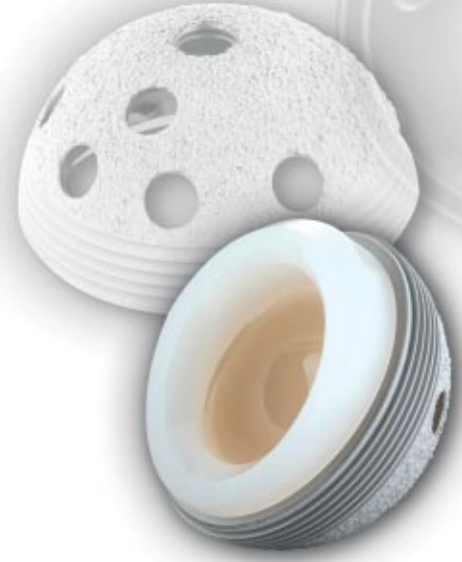
Cotyle à visser avec filet auto-taroudant

**Igloo**  
*sans ciment*



10°

**Azur**



**Swing**

Split Press-fit acetabulum  
ø 44 to 62

*cementless*

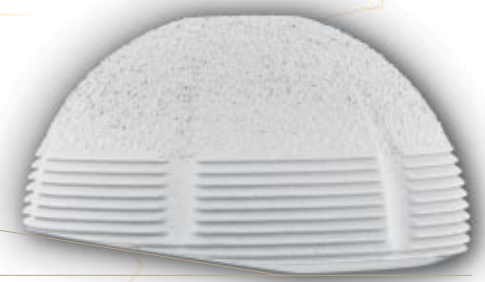


10°

Cotyle Press-fit fendu  
ø 44 à 62

**Swing**  
*sans ciment*

**Apogée**  
**Apogée**



10°

*cementless  
sans ciment*

Cotyle inox à double mobilité anti-luxation de première intention

**Fortress**  
**Fortress**

*sans ciment*

Cotyle Press-fit avec céramique dure  
ø 46 à 62

Press-fit acetabulum  
ø 46 to 62

*cementless*



**COTYLES**

# COTYLES



*cemented*  
**C6DB**



**C6DB**  
*à cimenter*  
ø 28



10°

Cotyle Press-fit  
ø 44 à 62



10°

Press-fit acetabulum  
ø 44 to 62

*cemented*

**Azur**  
*sans ciment*

**Lutécia**  
*à cimenter*

ø 22.22

ø 28



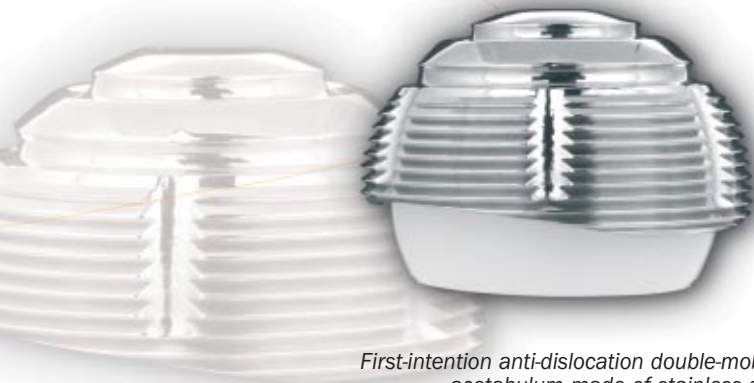
**Lutécia**

*cemented*



**Apogée**  
*à cimenter*

*cemented*



First-intention anti-dislocation double-mobility  
acetabulum made of stainless steel



**Tiges sans ciment**  
Cementless stems



**Filler**

12/14



**Fortress**

9/11

**FM**  
FM 9/11

*trochanteric  
reconstruction stem*

*tige de reconstruction  
trochantérienne*

*displasic*  
**TTH**

**TTH**  
*displasique*

9/11

## Tiges cimentées

*Cemented stems*

## Lutécia

9/11

**Lutécia**

*stainless steel*



*stainless steel*

*inox*

**Filler**

12/14

*titane*

*titanium*



Igloo  
Igloo

de révision

revision cup



Filler  
Filler

300 mm

12/14



Filler  
Filler  
révision



FM  
9/11  
inox



stainless steel

FM

*modular*

**TTHR**  
*modulaire* 9/11

**TTHR**

4 métaphyses/*metaphysal*  
L 85 mm  
14, 16, 18 et 20

36 quilles/*stems*  
L 105 à 255 mm  
ø 10, 12, 14, 16, 18 et 20

*monobloc*  
**TTHR**

**TTHR**

16 tiges monobloc/*monobloc stems*  
droite et gauche/*right and left*

L 190 à 340 mm  
ø 10 et 12

PE standart

Insert PE standart  
ø 28 . 10°



Insert Sandwich alumine  
ø 21 . 10°

aluminia Sandwich



Vis

ø 6.5  
L 15 à 45 mm



screw

Vis

Inserts

Inserts

Cupule

Cupule



Cupule mobile inox  
ø 28

stainless steel mobile cup



Insert céramique  
ø 28 et 32

ceramic insert



zirconia

zircone  
ø 22.22 et 28



Têtes  
Têtes  
Heads

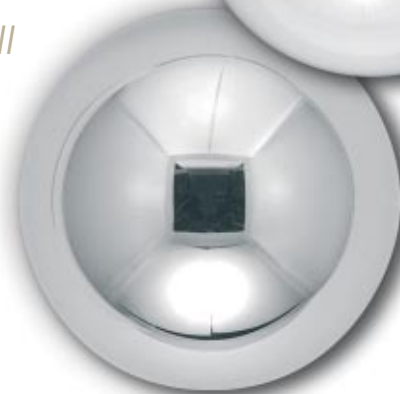
alumine ø 28 et 32

alumina



inox et chrome-cobalt  
ø 22.22 et 28

stainless steel  
cobalt chrome



Z.I. Athélia II

54, avenue du Serpolet  
13600 La Ciotat - France

Tél : +33 (0)4 42 98 14 30

Fax : +33 (0)4 42 98 14 39

biotechni@biotechni.com

www.biotechni.com



Implants CE 0120



BIOTECHNI®